

# LIVING IN LIGHT

Jakob Klint

KUBEN MANAGEMENT

jk@kubenman.dk



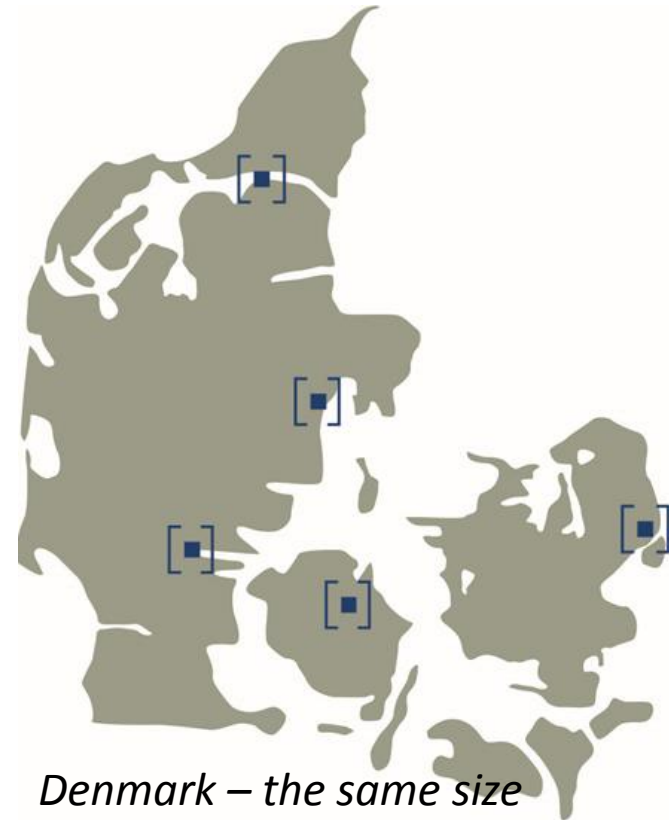
Kanton Bern  
Canton de Berne



ADVANCED  
BUILDING SKINS

### SERVICES:

- Client consultancy for housing association, municipalities, private investors etc.
- Construction and building management
- Procurement and procurements strategies
- Rehousing of tenants
- Advisory on low energy, BIPV, DGNB, Cradle to Cradle etc.
- Research and development projects in related to our services



*Denmark – the same size as Switzerland – no mountains but a lot of water in between*





# We love balconies



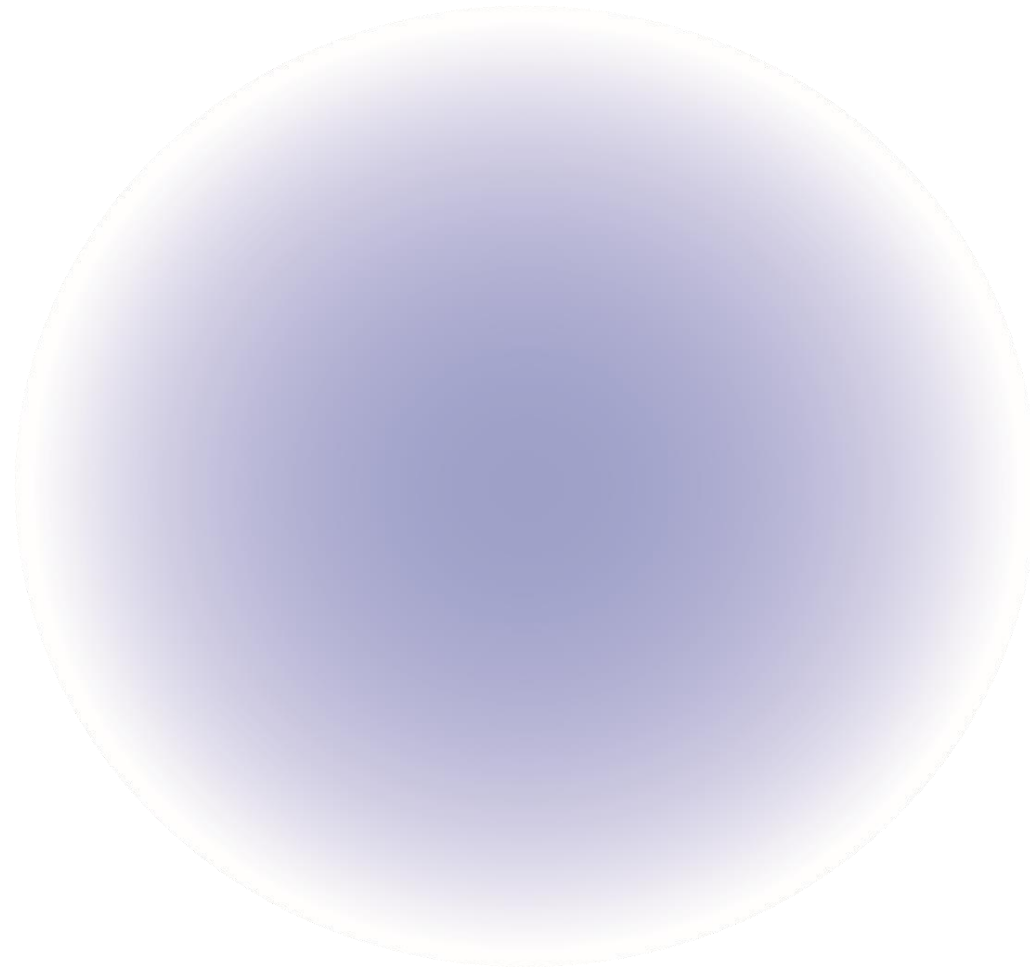
- also in COPENHAGEN



Kanton Bern  
Canton de Berne



ADVANCED  
BUILDING SKINS



LIVING IN LIGHT





Gottlieb Massage og behandling

Super Cut

M/K Klip

QVIST

LIVING DESIGN VINTAGE

36 30 00 06

36 30 00 06

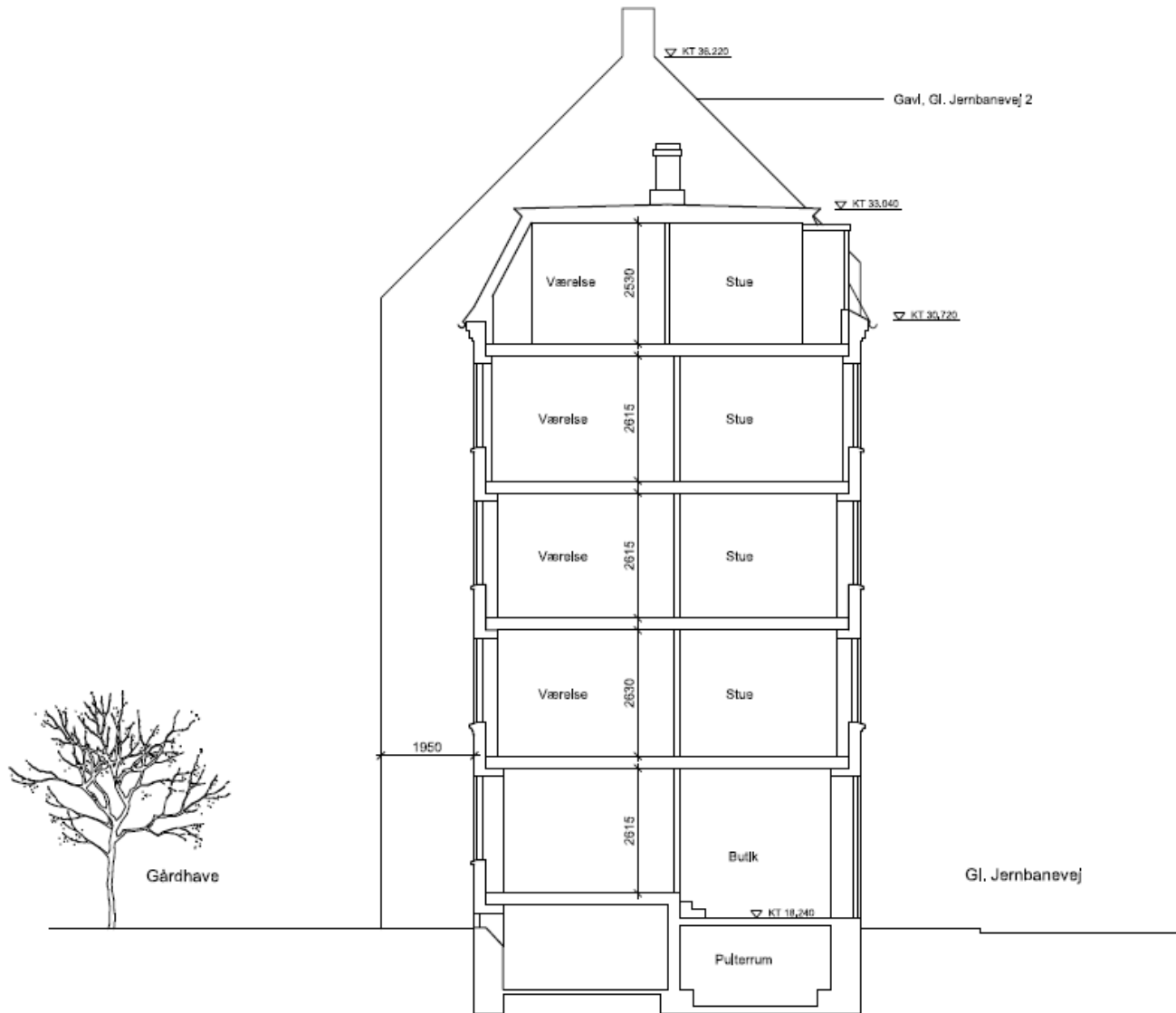




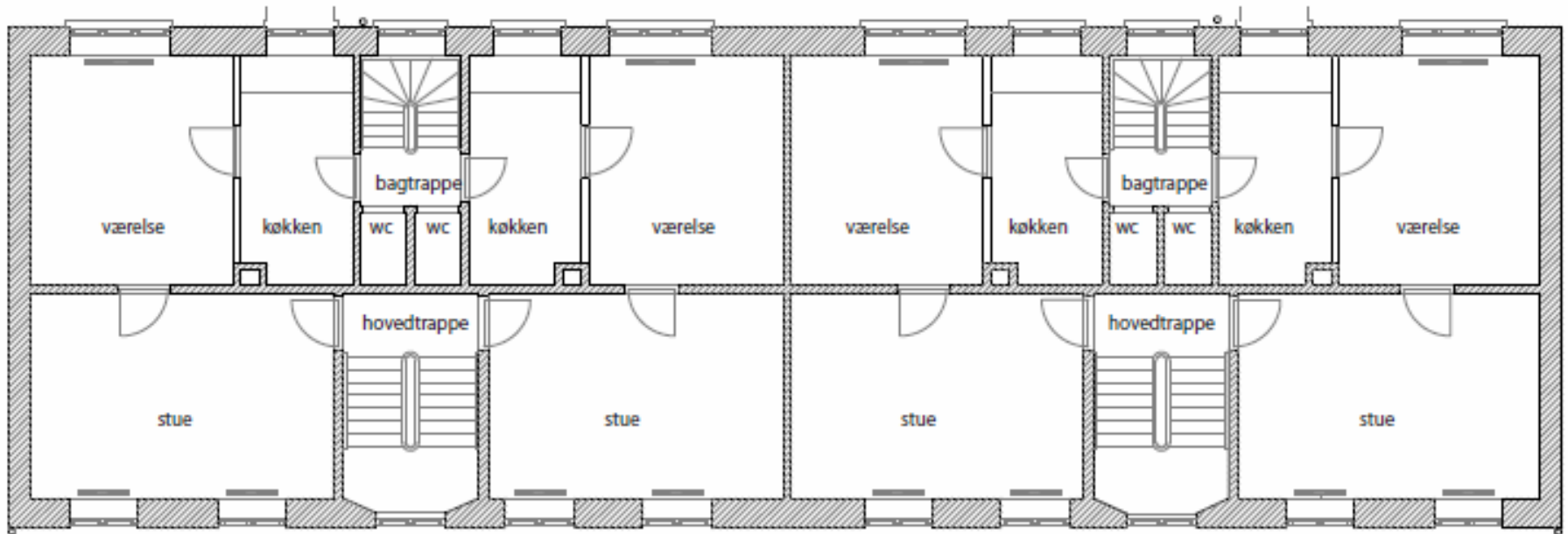


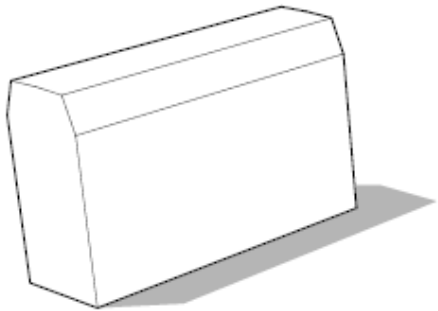




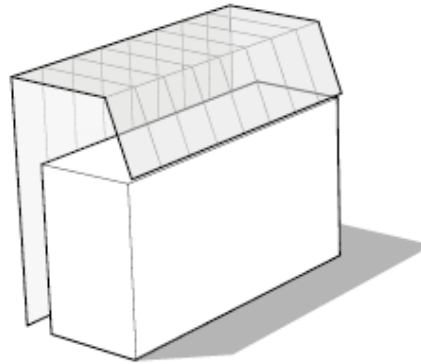


# EXISTING LAYOUT

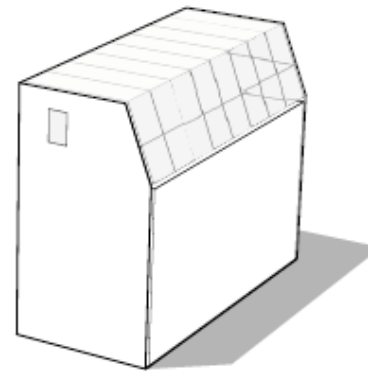




EKSISTERENDE BYGNING



AKTIV FACADE PÅFØRES



FÆRDIG APTERING



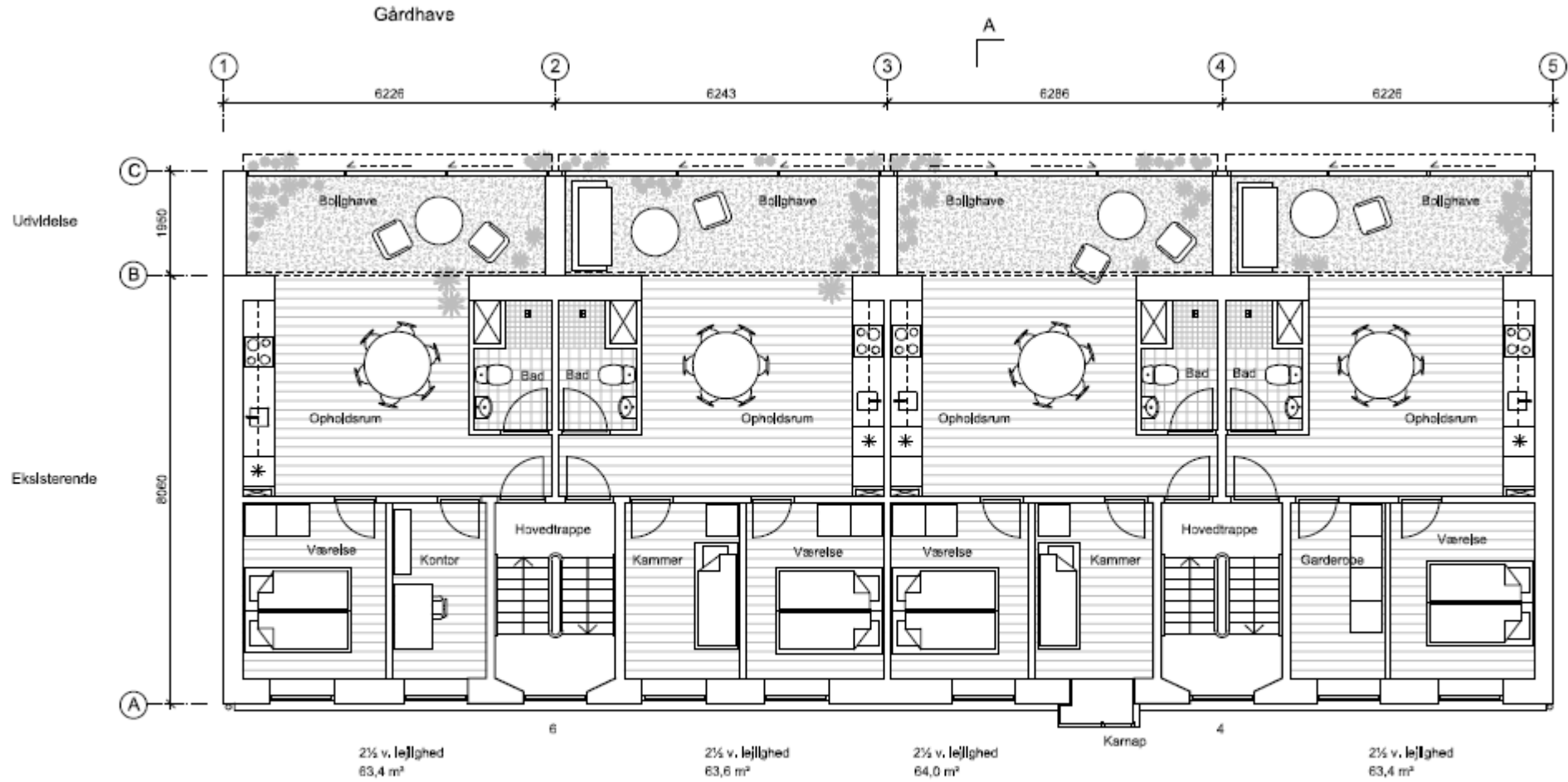
# MASSION DU VERRE, 1932







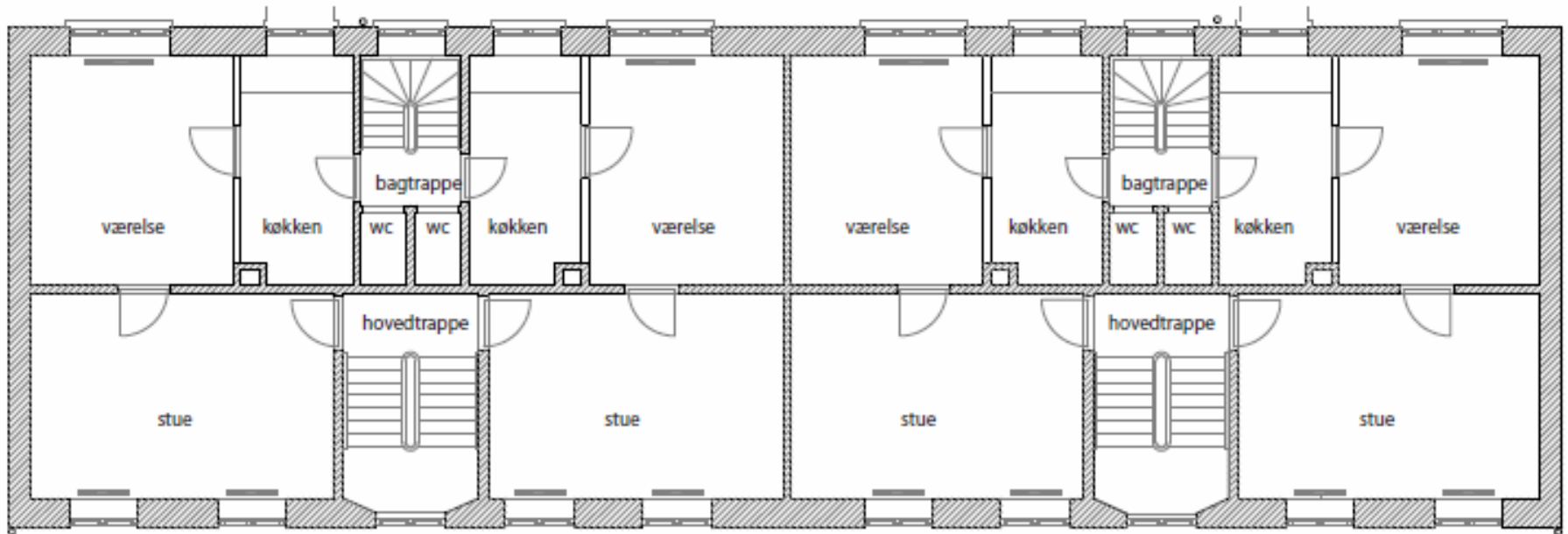
# NEW LAYOUT



G1, Jernbanevej

A

# EXISTING LAYOUT



# LIVING IN LIGHT



# Active House evaluating

CENERGIA

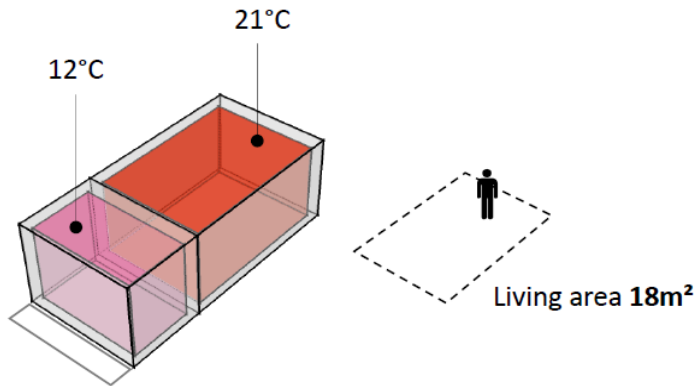


## WINTERGARDEN vs. SUMMERGARDEN COMFORT CONCEPT

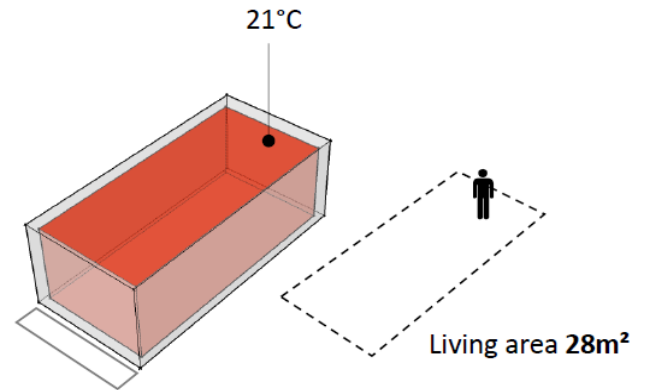
WINTER GARDEN FACADE



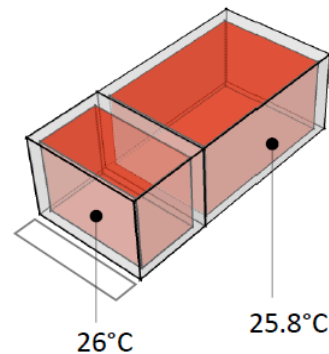
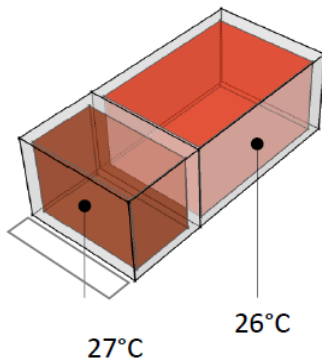
5°C



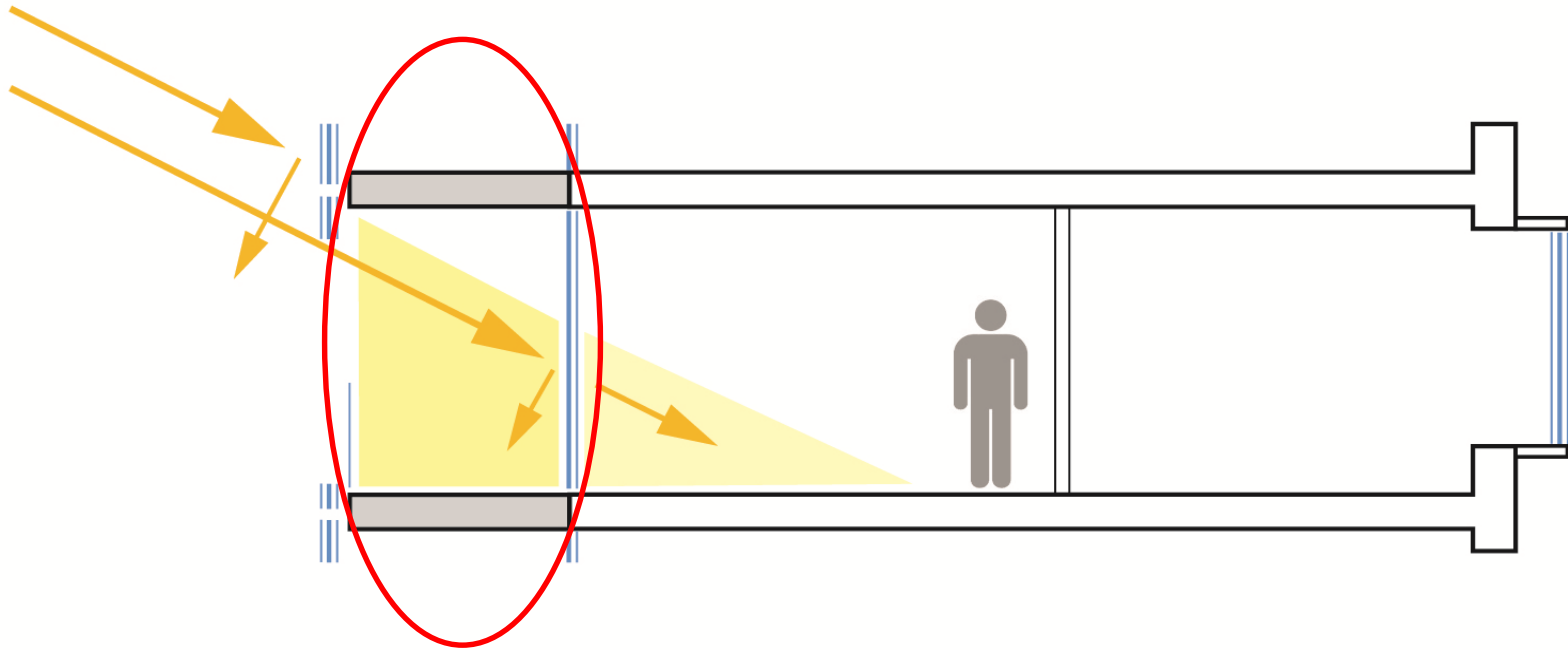
SOMMER GARDEN FACADE



26°C



# SUMMERGARDEN



# TEST

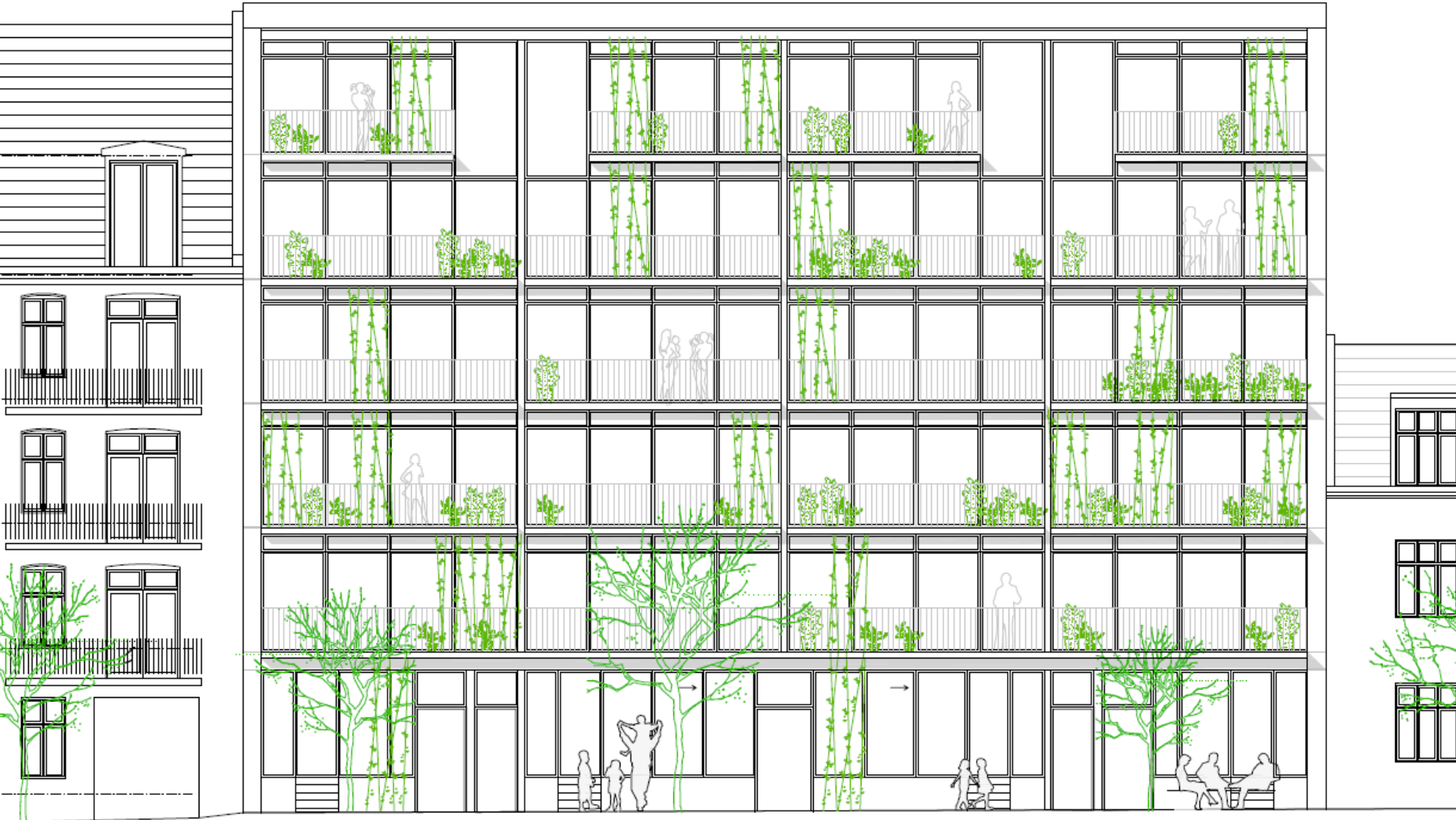


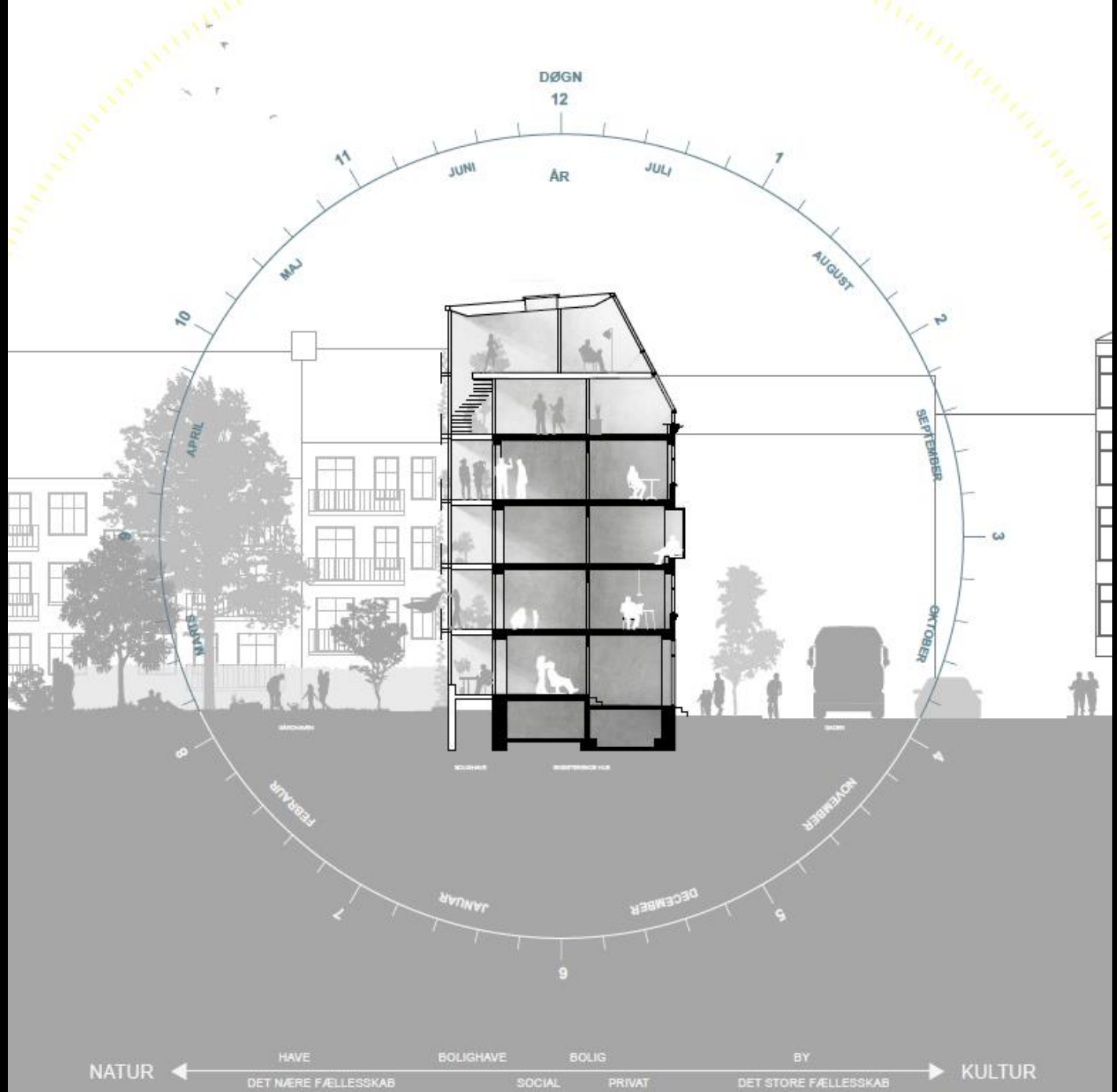












# CO-CREATION

## SUPPORT FORM

The Danish Transport, Construction and Housing Authority



Danish Energy Agency



Nordic Innovation



## PARTNERES



CENERGIA



DOMUS/  
ARKITEKTER



DOVISTA

TT Consultancy

KUBEN  
MANAGEMENT | NRG

# FACTS

- Private rental
- Build 1899
- 20 flats
- 800 -> 1,200 sq.m.
- Reach low energy demands for new build
- 12 flats 50 -> 60 sq.m
- 4 flats 40 -> 100 sq.m in 2 levels



THANK YOU

Jakob Klint / [jk@kubenman.dk](mailto:jk@kubenman.dk)

Read more: [livinginlight.info](http://livinginlight.info)

**KUBEN** NRS  
MANAGEMENT